

Wi-Fi Smart Dimmer Switch

- MS10W •



Specifications:
 Power: 120VAC, 60Hz
 Wireless Frequency: 2.4GHz
 Wireless Standard: IEEE802.11b/g/n
 Maximum Load:
 500 W incandescent, 150W LED
 (300W with both sides of heat sink tabs off)
 Minimum Load: 5W for LED bulbs
For indoor use.

FCC
 This device complies with part 15 of the FCC and Industry Canada license-exempt RSS standard(s). Operation is subjected to the following two conditions:
 (1) this device may not cause harmful interference, and (2) this device must accept any interference received, including interference that may cause undesired operation.

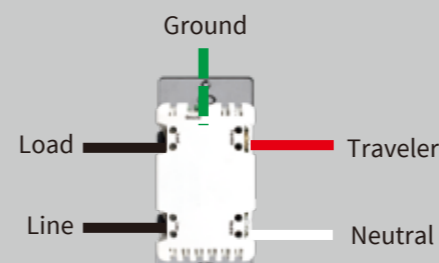
FCC NOTE: The manufacturer is not responsible for any radio or TV interference caused by unauthorized modifications to this equipment. Such modifications could void the user's authority to operate the equipment.
 — Reorient or relocate the receiving antenna.
 — Increase the separation between the equipment and receiver.
 — Connect the equipment into an outlet on a circuit different from that to which the receiver is connected.
 — Consult the dealer or an experienced radio/TV technician for help
NOTE: This equipment has been tested and found to comply with the limits for a Class B digital device, pursuant to Part 15 of the FCC Rules. These limits are designed to provide reasonable protection against harmful interference in a residential installation. This equipment generates, uses and can radiate radio frequency energy and, if not installed and used in accordance with the instructions may cause harmful interference to radio communications. However, there is no guarantee that interference will not occur in a particular installation. If this equipment does cause harmful interference to radio or television reception, which can be determined by turning the equipment off and on, the user is encouraged to try to correct the interference by one or more of the following measures:
Important note: To comply with the FCC RF exposure compliance requirements, no change to the antenna or the device is permitted. Any change to the antenna or the device could result in the device exceeding the RF exposure requirements and void user's authority to operate the device.

CAUTION - PLEASE READ!
 This device (MS10W) is intended for installation in accordance with the National Electrical Code and local regulations in the United States, or the Canadian Electrical Code and local regulations in Canada. If you are unsure or uncomfortable about performing this installation consult a qualified electrician.

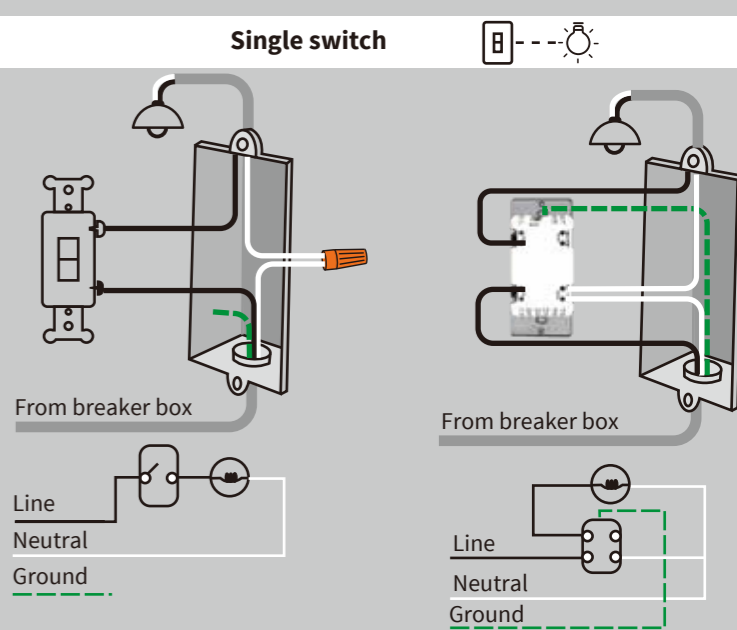
WARNING - SHOCK HAZARD
TURN OFF THE POWER to the circuit for the switch and lighting fixture at the service panel (circuit breaker) prior to installation.
ALL WIRING CONNECTIONS MUST BE MADE WITH THE POWER OFF to avoid personal injury and/or damage to the switch.

OTHER WARNINGS
 Risk of Fire
 Risk of Electrical Shock
 Risk of Burns

WARRANTY
 Our Products warrants this product to be free from manufacturing defects for a period of one year from the original date of consumer purchase. This warranty is limited to the repair or replacement of this product only and does not extend to consequential or incidental damage to other products that may be used with this product. This warranty is in lieu of all other warranties, expressed or implied. Some states do not allow limitations on how long an implied warranty lasts or permit the exclusion or limitation of incidental or consequential damage, so the above limitations may not apply to you. This warranty gives you specific rights, and you may also have other rights which vary from state to state.

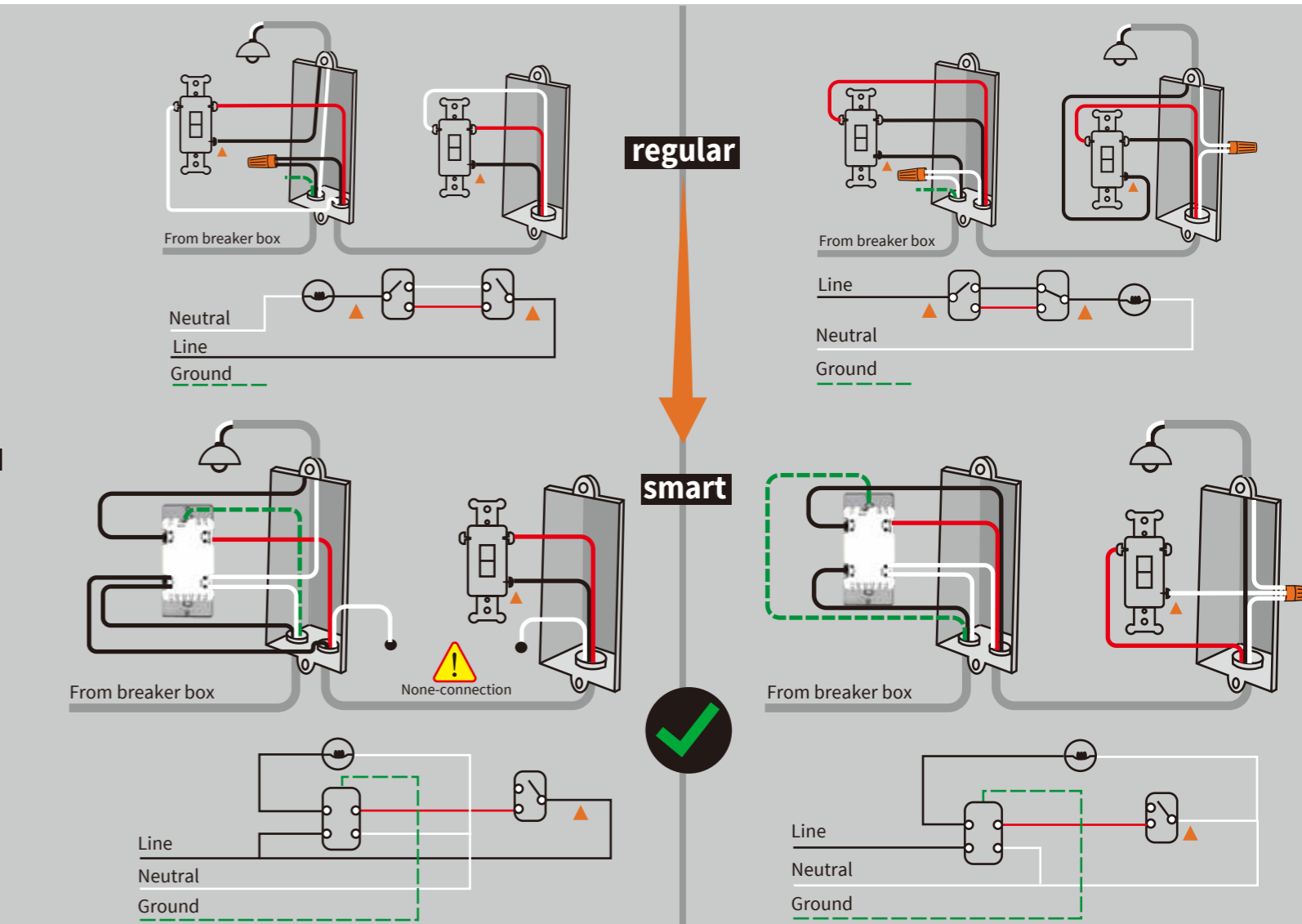


Identify the wires.
 — LINE (Hot) — Black (connected to power)
 — NEUTRAL — White
 — LOAD — Black (connected to lighting)
 — GROUND — Green/Bare
 — TRAVELER — Red/Other (only in 3-way in stallations)
 — COMMON



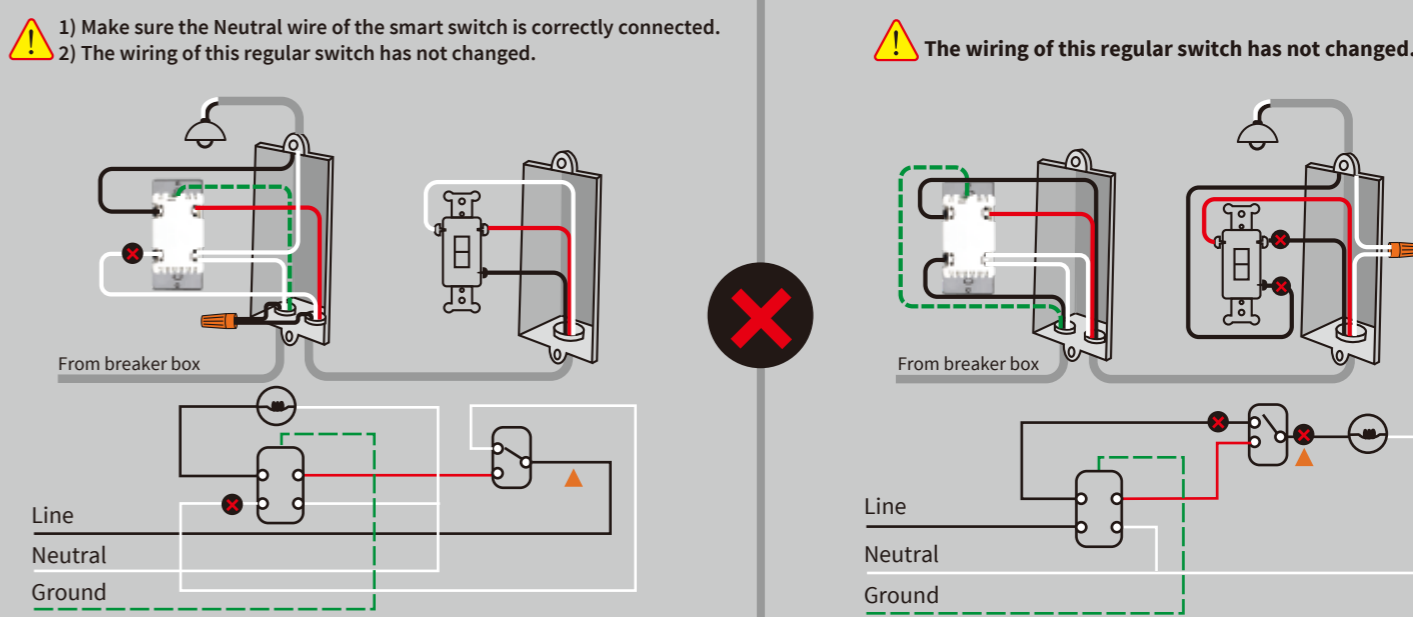
• Please contact us at ask@minoston.com if you have any questions during installation.

Please check which option is best for your 3-way installation.



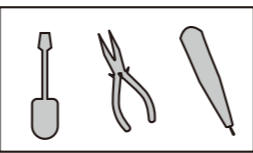
Please change the wiring of the regular switch to make the 3-way configure works properly.

When the smart switch does not work properly, there may be in error conditions:



Part 1. Installation

- Tools**
Please prepare a flat head screwdriver, a wire stripper and a voltmeter. Just in case you might need them.
- Turn off circuit breaker**
Find your light control in your circuit breaker and turn it off. Make sure the power is off by flipping your switch several times.
- Detach old switch**
Unscrew the top and bottom screws of the switch to detach it from the wall.
IMPORTANT! Verify power is OFF to switch box before continuing.
- INSTALL THE WIRES** (Refer to the step above the wiring diagram.)
- Fix the shell** (Please use our screws.)
- Turn on the circuit breaker**
Turn on your switch's power from the circuit breaker. Press the switch several times to check whether it works.



Scan to view installation guide



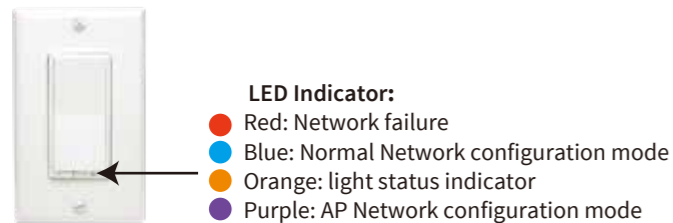
Air-Gap Switch:
 The "air gap switch" will cut power to the device if it's pulled out. It's located right below the main switch itself, often next to the LED. Pull out for Bulb replacement, push back for normal use.

Wiring Instructions - A Few Quick Reminders

Please do not try installing this device if you are unsure of how electrical circuits operate. Cause it can be dangerous and even life-threatening if you do not install this correctly. Please consult a qualified electrician if necessary. With that said, here are a few other warnings we'd like to point out for your safety:
 Pre-installation preparation
IMPORTANT!
 1. The Wi-Fi In-wall Smart Switch must not exceed **150W LED, 500W incandescent**.
 2. The switch is designed only for use with permanently installed fixtures.
 3. Before installation makes sure the voltage supply is disconnected. And carefully remove the switch from the switch box.
 4. The wall box required: 1-gang U.S. wall box. 3 1/4" in deep recommended, 2 1/4" in deep minimum.

Please contact us at ask@minoston.com if you have any questions during installation.

Part 2. Manual Control



LED Indicator:
 ● Red: Network failure
 ● Blue: Normal Network configuration mode
 ● Orange: light status indicator
 ● Purple: AP Network configuration mode

OPERATION GUIDE

- Adding your device to Wi-Fi network:**
Please make sure the switch is on the "OFF" position.
 Hold the "down" button more than 10s until the light bulb flashes and blue LED blinks rapidly to initiate App-configured Mode.
 NOTE: Solid 10s & Flash 1 time: Operation again, Until success.
- If you need to reset the device (Factory setting)**
Network reset
 1. Turn off the light (when the light is on)
 2. Hold the "down" button until the light bulb flashes (blue LED blinks rapidly)
Parameter Reset
 (all parameters are restored to the factory default)
 Press the "up/down" button 20 times quickly, the orange indicator flashes 3 times, the device is restored to the factory default successfully.
 NOTE: All previously recorded activity and custom settings will be erased from the device's memory.

Operation	LED	Switch
Press "down"	ON (Default)	Power OFF (Default)
Press "up"	OFF (Default)	Power ON (Default)
Hold	/	Dimmer up or dimmer down
Hold the "down" button more than 10s	● blue LED flashes	Connect to the network
Press the "down" button 10 times quickly	flash 3 times	Change LED status
Press the "up" button 10 times quickly	flash 3 times	Restores status after power failure
Press the "up" button 8 times quickly	flash 3 times	Output off State Setting
Press "down" button 8 times quickly	flash 3 times	Button Function Setting
Press the "up" button 5 times quickly	breathing flash	Setup Max brightness
Press "down" button 5 times quickly	breathing flash	Setup Min brightness
Press the button 20 times quickly	flash 3 times	Device Reset

Please contact us at ask@minoston.com if you have any questions during installation.

Minimum Brightness Value Setting

- (indicator flashes 3 times after setting successfully)
- 1: Press the "down" button 5 times quickly, the orange LED breathing flash into the minimum brightness setting mode.
- 2: Press and hold the "up/down" button to adjust the brightness of the bulb, and select the appropriate brightness to set the minimum brightness.
- 3: After selecting, press the "down" button 5 times to confirm, the orange indicator flashes 3 times after confirmed.
- 4: After that, the brightness of the bulb will automatically be adjusted from the set min brightness to the max brightness, then from the max brightness to the min brightness, finally stays at the set min brightness.
- 5: The minimum brightness setting is completed.

Maximum brightness value setting

- (indicator flashes 3 times after setting successfully)
- 1: Press the "Up" button 5 times, the orange LED breathing flash into the maximum brightness setting mode.
- 2: Press and hold the "up or down" button to adjust the brightness of the bulb, and select the appropriate brightness to set the maximum brightness.
- 3: After selecting, press the "up" button 5 times to confirm, the orange indicator flashes 3 times after confirmed.
- 4: After that, the brightness of the bulb will automatically be adjusted from the set max brightness to the min brightness, then from the min brightness to the max brightness, finally stays at the set max brightness.
- 5: The maximum brightness setting is completed.

Part 3. APP Connection

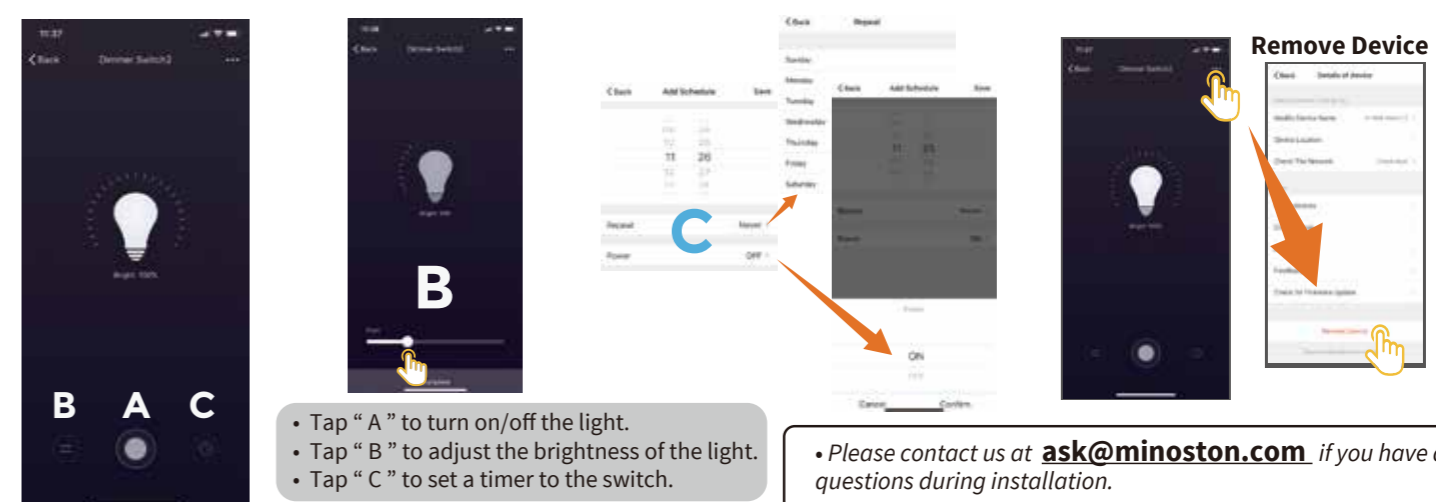
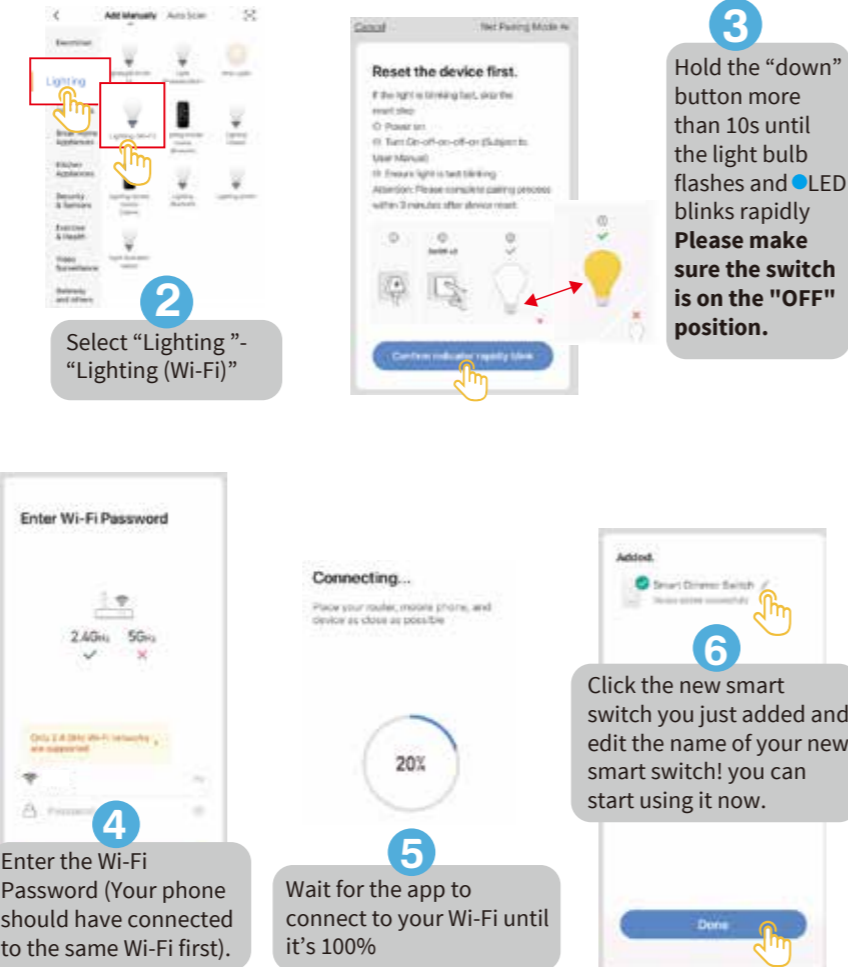


QR code Smart Life Amazon-Echo Google-Home

1. Please scan the QR code to download the application "Smart Life".
2. If you cannot download the Smart Life app, please search "Smart Life" on Google Play (for Android phone) or Apple Store (for iOS phone) to download.
After you download the Smart Life App and register a new account, please follow the instructions below to set up your smart switch.
3. The smart switch can be also used with **Amazon Echo** and **Google Home**. Please scan the QR code below and follow the instructions if you have any trouble pairing with them.

Note:
 1) Our products only support 2.4GHz Wi-Fi network.
 2) Please operate quickly when blue LED indicator blinks rapidly.
 3) When indicator flash enters the network, complete standard operation within 30s
 4) Purple LED Flashing slowly enters AP Mode (select "AP Mode" follow the below instructions.)

1 Tap '+' to add a device in your app (Our products only support 2.4GHz Wi-Fi network.)



- Tap "A" to turn on/off the light.
- Tap "B" to adjust the brightness of the light.
- Tap "C" to set a timer to the switch.

• Please contact us at ask@minoston.com if you have any questions during installation.

If you cannot successfully configure the default mode, try connecting to AP mode.

- 1) Click on "AP Mode" in the upper right corner.
- 2) When the blue LED indicator flashes quickly, press and hold the off button (default is the down button) for more than 5s until the bulb flashes twice to enter the AP mode, and the purple LED indicator flashes quickly.
- 3) Click "Confirm light flashes."
- 4) Enter Wi-Fi network password.
- 5) Open wireless WLAN settings with "SmartLife-xxxx".
- 6) Back in the application, continue adding devices and wait for the connection to complete.

Network Configuration

- 1) Turn off the light first (Please make sure the switch is on the "OFF" position).
- 2) Press and hold the off button (default is the down button) for more than 10s until the bulb flashes 1 time, and the blue LED indicator flashes quickly.
- 3) Guidelines for switching between AP Network configuration mode and Normal Network configuration mode:
 — Normal Network configuration mode to AP Network configuration mode: When the blue LED indicator flashes quickly, press and hold the off button (default is the down button) for more than 5s until the bulb flashes twice to enter the AP Network configuration mode, and the purple LED indicator flashes quickly.
 — AP Network configuration mode to Normal Network configuration mode: When the purple LED indicator flashes quickly, press and hold the off button (default is the down button) for more than 5s until the bulb flashes 1 time to enter normal mode, and the blue LED indicator flashes quickly.

Device Reset

- 1) Network reset
 step 1: turn off the light (when the light is on)
 step 2: hold the "Down" button until the light bulb flashes (blue LED blinks rapidly)
- 2) Parameter Reset (all parameters are restored to the factory default)
 step: press the "Up/Down" button 20 times quickly, the LED indicator flashes 3 times, the device is restored to the factory default successfully.

The indicator will flash 3 times after each parameter set successfully

Parameter	Available settings	Operation
Parameter 1: LED Indicator Status Setting. This parameter can access you to choose the led indicator to be on when the switch(light) is on/off, or LED indicator remains on/off all times.	Value=1 (default) Orange LED is On when the switch(light) Off and Orange LED is Off when the switch (light) On. Value=2 Orange LED is On when switch(light) On and Orange LED is Off when the switch(light) Off. Value=3 Orange LED is always Off. Value=4 Orange LED is always On.	Quick press "Down" button 10 times. Please note: the switching of each value is in order, a quick press "Down" button 10 times will switch once. eg: Switching from value1 to value 4 needs 3 switchings.
Parameter 2: Restores State after Power Failure This parameter can access you to set the switch to be on/off after power failure.	Value=1 (default) memory state before power failure The switch will be return to state prior to the power failure after power is restored. Value=2 The switch is off regardless of the state prior to power failure. Value=3 The switch is off regardless of the state prior to power failure.	Quickly press "Up" button 10 times. Please note: the switching of each value is in order, a quick press "Up" button 10 times will switch once. eg: Switching from value1 to value 3 needs 2 switchings.
Parameter 3: Light Off State Setting This parameter can access you to set the light fade out or off immediately.	Value=1 (default) Fade out Value=2 Instantaneous off	Quick press "Up" button 8 times Please note: the switching of each value is in order, a quick press "Up" button 8 times will switch once. eg: Switching from value1 to value 2 needs 1 switching.
Parameter 4: Button Function Setting This parameter can access you to set the up button to turn the light on/off.	Value=1 (default) The up button turn the light on and down button turn lights off. Value=2 The up button turn the light off and down button turn lights on.	Quick press "Down" button 8 times Please note: the switching of each value is in order, a quick press "Down" button 8 times will switch once. eg: Switching from value1 to value 2 needs 1 switching.

Part 4. Troubleshooting

Possible Problem	Possible Cause	Solution
• Unable to connect with the phone	Network issue.	Please check if the red LED blinks. If yes, retry to add this switch to your network.
• The light bulb blinks when the switch turn it off	There is a leakage of electricity or the bulb does not close with the switch	Rewire the switch or replace the bulb.
• Cannot turn the switch on/off manually	1. Incorrect wiring 2. No electricity 3. The bulb is broken or incompatible	• Make sure the switch wiring is correct • Inspecting circuit breakers; Make sure the power supply is restored • change a light bulb
• The switch is not work with APP control	1. Network delay or disconnect 2. The phone refuses your permission 3. The switch out of the order	• Check your network connectivity, The switch needs to be reconnected • Grant permission on your phone settings • Manually switch on to check the switch
• The switch cannot connected to the application	1. Enter wrong Wi-Fi password 2. Weak Wi-Fi signal 3. Unable to connect to Wi-Fi	• Enter the correct Wi-Fi password • Check Wi-Fi signal • Confirm Your Wi-Fi is 2.4GHz

Please contact us at ask@minoston.com if you have any questions during installation.